

WENTWORTH CENTER

33 East Wentworth Avenue • West St. Paul, MN 55118

OFFICE FOR LEASE
1,125 RSF AVAILABLE

Ste. 360



Property Overview:

- Professional Class B+ Office Building
- Building Conference / Training Room
- Card Access Security System
- Abundant On-Site Parking

Suite 360 Features:

- Beautiful Wood Floors,
- 4 Offices, Waiting Area
- Windows along Outside Wall

Located in West St. Paul City Center Across from City Hall, Recreation Center & LA Fitness

Outstanding Access & Visibility, Minutes from the Airport, MOA, & Downtown Saint Paul 1 Block off Bus Line

Build Out Provided

\$18.50/SF Gross (\$9.85 NNN) = \$1,735.00/month Gross

For More Information or Showing, Please Contact

Barry Bosold

651-415-1363

Barry@RealSolve.com

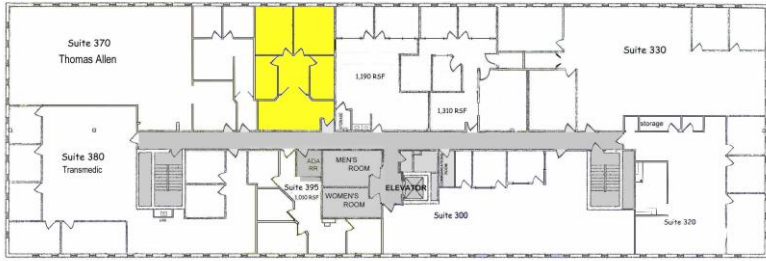
David Gimberline

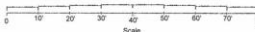
651-451-6400

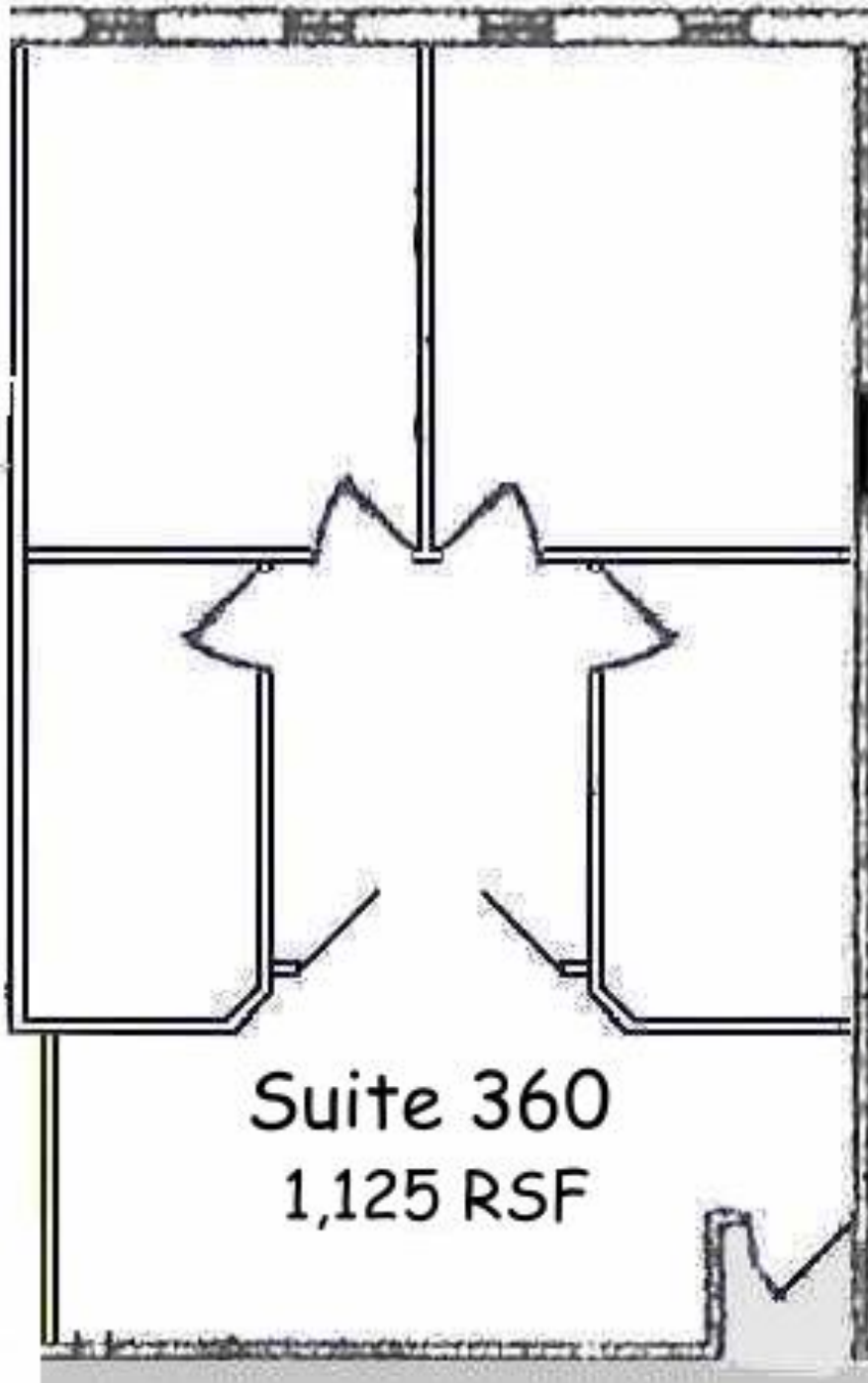
Dave@RealSolve.com

RealSolve Group, LLC

Solving Problems / Creating Value / Bringing Substance to Vision



THIRD FLOOR  Wentworth Center



RealSolve Group, LLC

Solving Problems / Creating Value / Bringing Substance to Vision