

# WENTWORTH CENTER

33 East Wentworth Avenue • West St. Paul, MN 55118

FULL 1<sup>ST</sup> FLOOR!  
14,000 RSF AVAILABLE



- Full 1<sup>st</sup> Floor Available!
- Professional Class B+ Office Building
- Conference / Training Rooms
- Card Access Security System
- Abundant On-Site Parking
- Windows on 2 sides
- Many Offices & Space for Multiple Workstations,
- Server Room, Storage
- Can Be Configured to Meet Your Needs

Located in West St. Paul City Center Across from City Hall, Recreation Center & LA Fitness

Outstanding Access & Visibility, Minutes from the Airport, MOA, & Downtown Saint Paul 1 Block off Bus Line

Build Out Provided

**\$18.50/SF Gross (\$10.00 NNN) = \$21,584/month Gross**

For More Information or Showing, Please Contact

**Barry Bosold**  
**651-415-1363**

[Barry@RealSolve.com](mailto:Barry@RealSolve.com)

**David Gimberline**  
**952-939-9749**

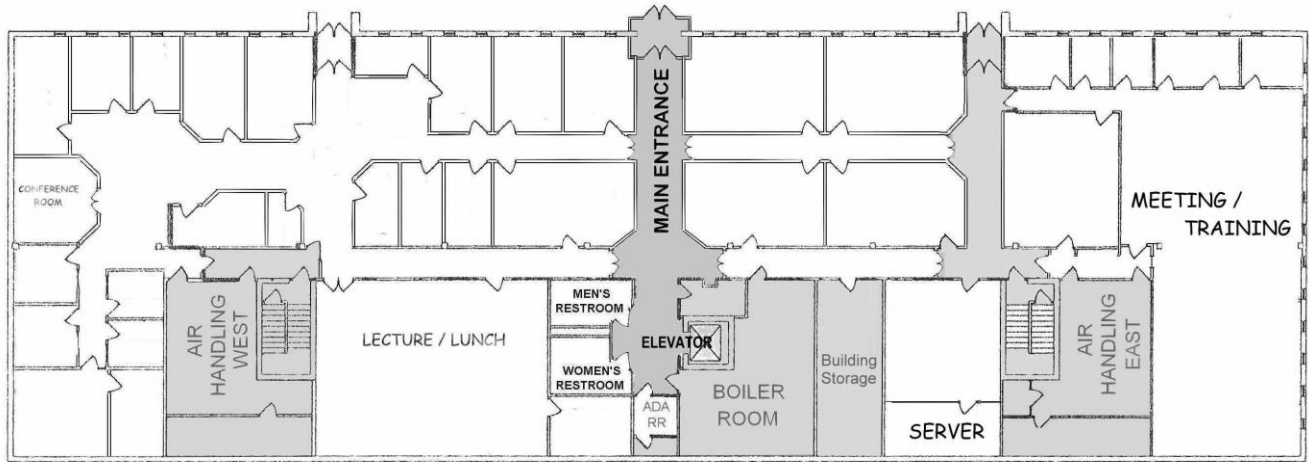
[Dave@RealSolve.com](mailto:Dave@RealSolve.com)

**RealSolve Group, LLC**

Solving Problems / Creating Value / Bringing Substance to Vision



1st Floor 14,000 RSF



0 5 10 15 20 25 30 35 40 45 50 55 60 65

Wentworth Center

**RealSolve Group, LLC**

Solving Problems / Creating Value / Bringing Substance to Vision