

WENTWORTH CENTER

33 East Wentworth Avenue • West St. Paul, MN 55118

OFFICE FOR LEASE
3,708 RSF AVAILABLE



Property Overview:

- Professional Class B+ Office Building
- Building Conference / Training Room
- Card Access Security System
- Abundant On-Site Parking

Suite 280 Features: Beautiful Endcap Space with Windows on 3 Sides, 8 Offices & Space for Multiple Workstations, 2 Large Training Rooms, Conference Room, Reception Desk, Kitchenette, Server Room, Storage

Can Be Configured to Meet Your Needs

Located in West St. Paul City Center Across from City Hall, Recreation Center & LA Fitness

Outstanding Access & Visibility, Minutes from the Airport, MOA, & Downtown Saint Paul 1 Block off Bus Line

Build Out Provided

\$18.50/SF Gross (\$9.65 NNN) = \$5,562/month Gross

For More Information or Showing, Please Contact

Barry Bosold
651-415-1363

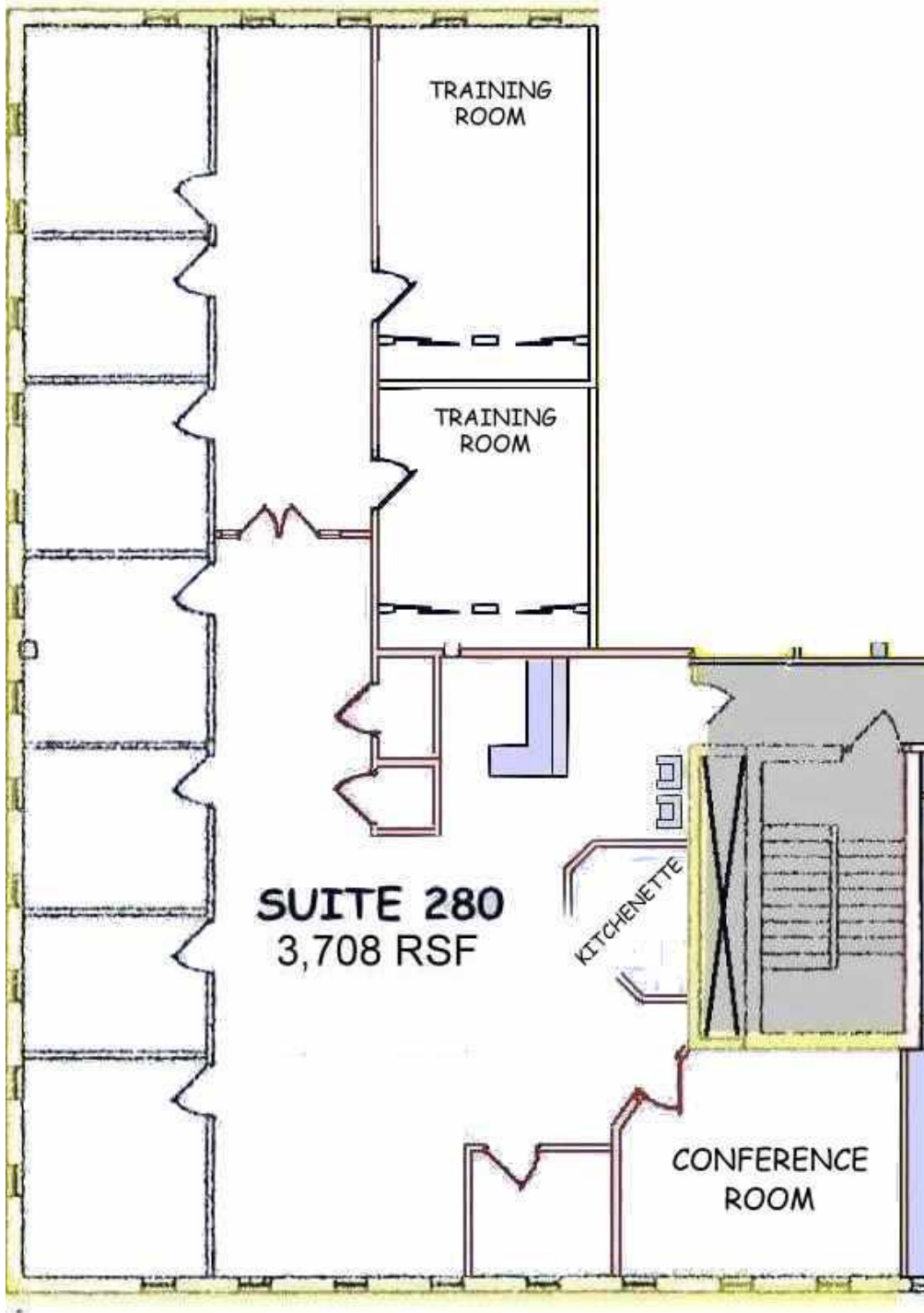
Barry@RealSolve.com

David Gimberline
651-451-6400

Dave@RealSolve.com

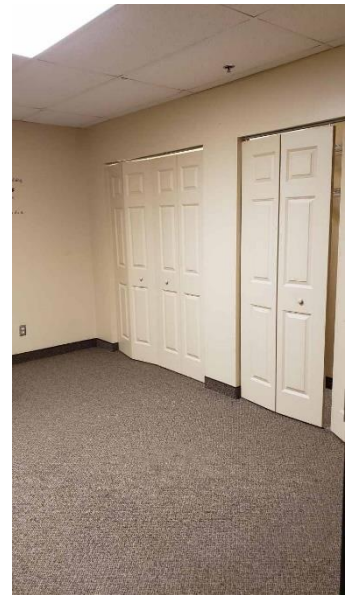
RealSolve Group, LLC

Solving Problems / Creating Value / Bringing Substance to Vision



RealSolve Group, LLC

Solving Problems / Creating Value / Bringing Substance to Vision



RealSolve Group, LLC
Solving Problems / Creating Value / Bringing Substance to Vision